

# Minimising risk, enhancing project performance

Capabilities Statement | 2022



ABOUT GBA

# Over 35 years and counting

For more than 35 years, GBA Projects has enabled project success through the implementation of industry leading systems and practices to minimise project risk and enhance project performance.

## GBA Projects

With proven success on major projects around the globe, GBA Projects ensures complete project planning, control and management from inception to completion.

A fully tailored approach to specific client needs has seen GBA Projects continue to secure large-scale local, national and international contracts through the provision of the highest quality service and solutions.

## Why GBA Projects



### EXPERIENCE

Over 1000 successful projects across various industries



### GLOBAL

Project controls practitioners with international experience



### RESULTS

Award-winning practices



### VALUE

Working smarter, not harder, to ensure return on investment

WHO WE ARE

# Our Vision

*Be recognised for making a positive difference in projects nationally.*

## Mission

GBA Projects is committed to **project controls** excellence. We will tackle project challenges by combining **best practice** with **creativity** to enable **quality** results across projects in all industries.

## Core values



EXCELLENCE IN  
PERFORMANCE



TEAMWORK  
APPROACH



CLIENT  
FOCUS



HONESTY &  
INTEGRITY



CREATIVITY



WHAT WE DO

# Services & Sectors

## Services

**Planning & Scheduling** Using tools such as Microsoft Project and Primavera P6 to plan your projects over the full project lifecycle.

**Project Controls** Integrating scope, cost, time and risk to monitor and control your projects to successful on-time and on-budget completion.

**Forensic Delay Analysis** Deep diving into complex schedule data to provide efficient and robust analytical insight into progress and delay.

**Cost & Schedule Range Analysis** Development of schedule and cost contingency models by simulating your project's possible outcomes thousands of time over.

**Integrated Project Solutions** Development of bespoke system integrations and reporting using VBA code, Power BI and more.

**Project Management** Support to the project delivery team through proactive coordination and PMBOK processes.

## Sectors

**Building & Health** New Royal Adelaide Hospital, Memorial & Ashford Hospitals.

**Utilities & Infrastructure** Sydney Water Portfolio (1,000+ projects annually), Eyre Peninsula reinforcement, SA Water.

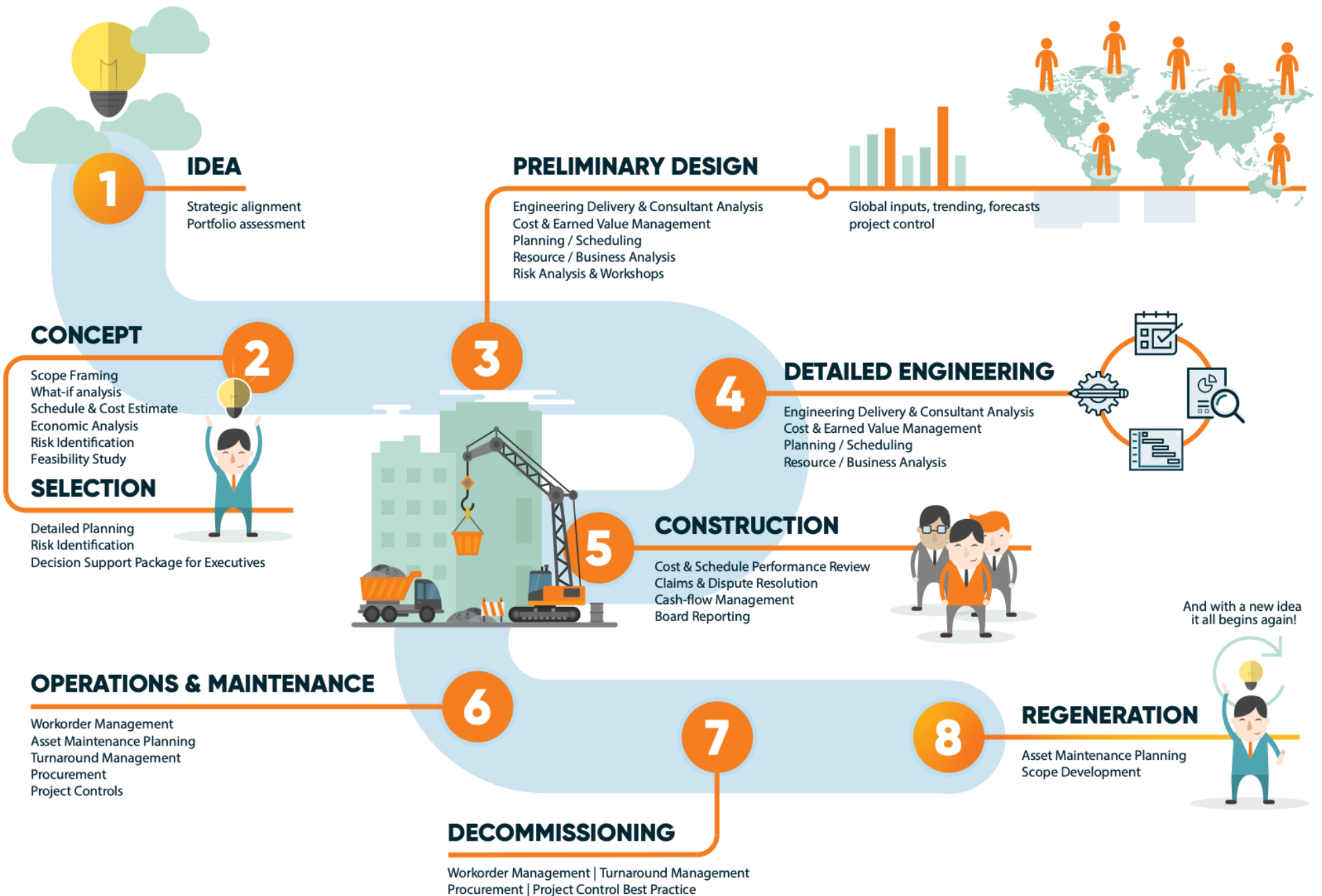
**Mining & Resources** Olympic Dam Projects, Smelter Campaign Maintenance shutdowns.

**Transport, Road, Rail** Department of Infrastructure and Transport Portfolio, Darlington Upgrade, Northern Connector, City Tram Extension.

**Oil, Gas & Petrochemical** Santos portfolio planning, Beach possible outcomes thousands of times over. Energy Offshore Phase 4 and Nearshore Phases 1 and 2.

**Defence** Offshore Patrol Vessel Program, Collins Class Submarines.

**Information Technology** Multiple ERP system implementations.





## WHO WE ARE Our Team

GBA is made up of highly talented experts with a passion for clients and their specific projects. With offices and teams in Adelaide and Sydney, GBA Projects combines local, national and international market knowledge with technical excellence.

GBA Projects is a creative, out-of-the-box project management company that delivers tangible results for some of the world's most significant large-scale projects.



WHO WE ARE

# Staff Profiles

---



## Matt Betros

Managing Director

As Managing Director of GBA Projects, Matt Betros has significant industry experience in numerous fields and has firmly established a reputation for innovation, creativity, and exceptional results. Matt's skills extend to numerous industries with his participation in the successful delivery of multiple and varied projects.

Matt's experience as a project controls consultant extends to numerous industries and sectors. Having

been involved in numerous Extension of Time processes and arbitrations as a forensic analyst, Matt has provided detailed planning and analytical support to some very large infrastructure projects for ElectraNet and the Department of Infrastructure and Transport.

WHO WE ARE

# Staff Profiles

---



## Paddy McCarron

Director

As a Director of GBA Projects, Paddy McCarron has considerable experience both in Australia and overseas. Paddy has made a significant impact across a range of high profile national and international projects and turnarounds.

Paddy commenced with GBA Projects in mid-2011 and with two years' experience in his native Northern Ireland and now has over 10 years industry experience.

With a degree and background in Civil

Engineering, he is known for his client-based focus, significant experience in Construction, Mining, Oil & Gas and Infrastructure and comprehensive understanding of Risk and Assurance EOTs as well as claims experience.



WHAT WE DO

# Who We've Worked With

DEPARTMENT OF  
TRANSPORT & INFRASTRUCTURE  
AURECON SPOTLESS  
ADELAIDE BRIGHTON CEMENT  
BHP  
RIO TINTO KBR UNITED KG SMEC ELECTRANET  
SA WATER ETSA SANTOS ENERVEN INCITEC  
ACCIONA CRANE SERVICES VISION STREAM BUILT ENVIRONS WATSON FITZGERALD PIVOT  
DELTA GROUP BEACH ENERGY URS SKM SAAB SYSTEMS  
OILSEARCH KALARI AUSCO POWERLINK JACOBS WSP  
LEND MOSSOP WORLD MOSQUITO HULLY UNIVERSITY OF ADELAIDE CONSOLIDATED  
LEASE SAMARAS HANSEN & YUNKEN FACTOR UTB GHD POWER PROJECTS  
LEIGHTON LUERSSSEN VISION STREAM RUSSELL & YELLAND  
QUEENSLAND RAIL RPS SYDNEY WATER  
OZ MINERALS MCCONNELL DOWELL  
SITZLER

## WHAT WE DO

# Projects

## Sydney Water Portfolio

<b>Client</b>	Sydney Water
<b>Sector</b>	Utility Infrastructure
<b>Location</b>	NSW
<b>Duration</b>	5 Years to present
<b>Value</b>	> \$5 billion



## Overview

### Portfolio Controls on a Large Scale

For over 5 years GBA Projects has provided integrated scheduling support to its key client, Sydney Water. Sydney Water's portfolio can, at any one time, boast thousands of projects within its capital works program, which requires a measured approach to project controls.

GBA was instrumental in developing a bespoke solution for drilling down into schedule progress using the Power BI platform. By coding and tagging specific items within a Primavera P6 schedule, analysts can understand the basis of KPI outputs, understand performance of a portfolio at varying levels and more.

In addition to this value add, was the implementation of cost loaded scheduling processes within Primavera P6, GBA was able to quickly support the financial reporting requirements of the business. The finance team can extract a monthly overview of cashflow forecasts to support regular reporting internally and to external stakeholders.

## WHAT WE DO

# Projects

## Adelaide Central Reinforcement

<b>Client</b>	ElectraNet SA
<b>Sector</b>	Utility Infrastructure
<b>Location</b>	Adelaide, SA
<b>Duration</b>	4 years
<b>Value</b>	\$190M



## Overview

### Award Winning Project Controls

The ACR program represents the largest injection of network capacity into the Adelaide CBD in recent years. The project was set a hard date for delivery which required significant up-front and detailed planning. The project completed on-time and on-budget, taking out many awards including the 2012 AIPM Project of the Year.

Comprising of a new indoor 275/66kV substation, an 18km 275kV underground cable from Torrens Island Power Station and an extensive installation of fibre optic back-bone, the project won the 2012 Engineers Australia Excellence Award.

GBA Projects was pivotal in establishing the schedule, integrating cost control via the ERP System (SAP) and developing a strict Earned Value and Forecast management process using Deltek Cobra.

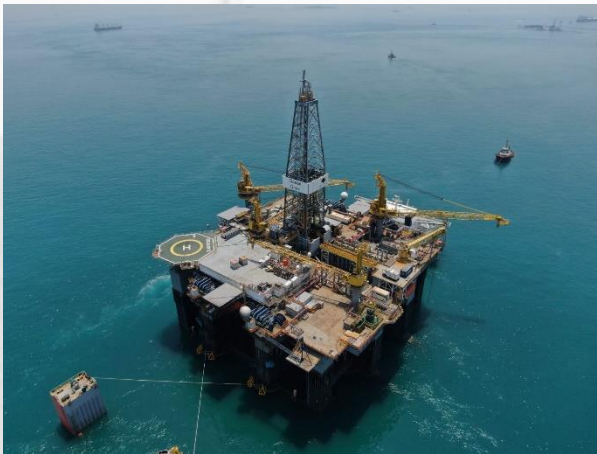


## WHAT WE DO

# Projects

## Otway Offshore Phase 4

<b>Client</b>	Beach Energy
<b>Sector</b>	Oil & Gas
<b>Location</b>	Adelaide & Otway
<b>Duration</b>	Victoria 4 years
<b>Value</b>	\$>700M



## Overview

### Major Oil & Gas Investments

GBA was engaged in 2018 to provide scheduling, cost control and risk management support to Beach energy's major projects portfolio, which includes the Offshore Phase 4 project. The Otway Basin portfolio involves natural gas production from numerous offshore fields, processed at the Otway Gas Plant near Port Campbell.

The Otway Offshore Project involves the exploration and development of several wells, tied back to the Thylacine platform via subsea pipelines with additional equipment being installed at the Otway Gas Plant.

GBA has been involved in this major investment from the start of the project. Utilising Primavera P6 with

integration to EcoSys, GBA has provided integrated schedule and cost control for the project to successful completion in 2022.



---

## ADELAIDE

### Head Office

Level 2, 345 King William Street,  
Adelaide SA 5000  
+61 (8) 8410 8700

## SYDNEY

3 Parramatta Square,  
Level 14, 153 Macquarie Street  
Parramatta, NSW, 2150  
+61 (2) 9641 6611

[gbaprojects.com.au](http://gbaprojects.com.au)